



PowerShot G1X Mark III

DSLR PERFORMANCE IN A COMPACT BODY

Featuring an APS-C sized sensor for the first time, plus the speed of Canon's Dual Pixel CMOS Auto Focus system and premium DIGIC 7 processor, the PowerShot G1X Mark III is a killer combination of DSLR image quality with the handling never before seen in a Canon compact camera.



Superb image quality in every condition

Leveraging an exceptional sensor, similar to the one seen in the EOS 80D, and with capabilities to shoot in an ISO range of 100 to 25,600, the PowerShot G1X Mark III can flexibly capture quality images in a range of conditions. From high contrast scenes, such as indoor environments where detail, clarity and low image noise are critical, to low contrast scenarios such as a foggy days. The built in 3x zoom lens boasts a versatile 24 – 72 mm (35 mm equiv) focal range and a close-focusing distance of just 10cm, so you can cover an impressive range of photography genres with a single lens.



Super fast auto focus and exceptional subject tracking

With the first inclusion of Dual Pixel CMOS AF in a Canon Compact camera, the PowerShot G1X Mark III delivers precise and rapid focus in just 0.09 seconds, giving the level of responsiveness, speed and confidence needed for capturing a spontaneous shot at a moment's notice.

Beautiful handling

This camera not only feels good to use, but its features enable a familiar DSLR level of instinctiveness and control, alongside the ability to customise it for your own use. The PowerShot G1X Mark III comprises a central, built-in Electronic Viewfinder (EVF), which has been optimised to deliver a high-resolution view via a 2.36 million dot Organic EL display. For the more adventurous photographer, the PowerShot G1X Mark III features weather sealing for durable performance in challenging conditions and as an increased level of protection against dust and moisture.



no one sees it like you

Canon

PowerShot G1X Mark III

DSLR PERFORMANCE IN A COMPACT BODY

ISO
25600



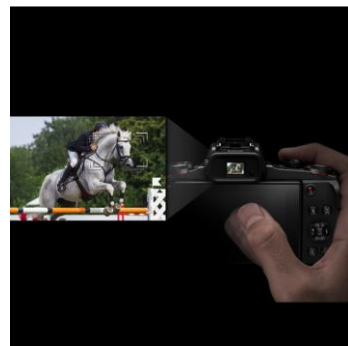
Shoot night scenes or dark indoors with outstanding clarity thanks to the large APS-C sized CMOS sensor, DIGIC 7 processor and ISO speeds up to 25600.


Vari angle LCD



Control at your fingertips with the vari-angle Touch LCD screen. Quickly select focus points and shoot via Touch Shutter and swipe to review your images.

OLED EVF
2,360,000 dots



Enjoy DSLR-like handling with an organic EL viewfinder, offering high resolution, accurate colours and precise control with Touch and Drag AF.

f/2.8-5.6
LENS



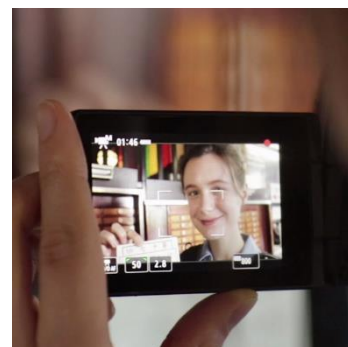
The 24-72mm equivalent f/2.8-f/5.6 Canon Lens has been optimized for the APS-C imaging sensor, delivering sharp images with blurred background.

 **Bluetooth®**



A constant connection between the PowerShot G1X Mark III with your smartphone can be maintained via Bluetooth® connectivity, switching automatically to Wi-Fi when you want to view and download your photos


EOS Movie
FULL HD



Created Full HD 60p movie with fast and smooth autofocus thanks to the PowerShot G1X Mark III's advanced Dual Pixel CMOS AF Processor .

no one sees it like you

Canon



Fast, powerful and innovative, Canon's advanced DiG!C 7 imaging processor commands cutting-edge technologies to deliver stunning quality, fast performance and intuitive operation



PowerShot G1X Mark III delivers high-continuous shooting at up to 7 frames per second whilst maintaining AF performance so you can be confident in catching fast moving action.



Dual Pixel CMOS AF delivers fast and smooth AF as well as exceptional tracking performance when shooting in Live View and movie mode

Touch & Drag AF

For maximum control when using the viewfinder, the LCD touch screen can be turned into a touch pad, letting you use your thumb to change the AF point or zone and even perform a seamless focus pull in movie mode



Built in time lapse movie mode with a choice of 3 scene types will shoot a series of still images and then save them as a time lapse movie within the camera



For Full HD 60p movies that stay steady even when you don't, the camera body features 5 axis-stabilization which is enhanced even further when using a lens equipped with Dynamic IS.



Panoramic Shot

Capture sweeping panoramic images with ease by switching to panorama shot mode and simply panning the camera. Continuously shot photos are combined into one panoramic image.



Incredible image quality in all situations thanks to a large 24.2 megapixel CMOS sensor. This means better details; and clean crisp images, worthy to print for you wall.



Sold separately, the WP-DC56 waterproof case is perfect for taking stunning stills and movies up to a depth of 40meters.

no one sees it like you



Technical Specifications

| | |
|---------------------------|---|
| IMAGE SENSOR | |
| Type | APS-C CMOS |
| Effective Pixels | Approx. 24.2 M |
| Aspect Ratio | 3:02 |
| Colour Filter Type | Primary Colour |
| IMAGE PROCESSOR | |
| Type | DIGIC 7 |
| LENS | |
| Focal Length | 15 – 45 mm (35 mm equivalent: 24 – 72 mm) Optical 3x ZoomPlus 6x |
| Zoom | Digital Approx. 4x (with Digital Tele-Converter) Approx. 1.6x or 2.0x [1] Combined Approx. 12x |
| Maximum f/number | f/2.8 - f/5.6 |
| Construction | 9 elements in 8 groups (3 double-sided aspherical lenses and 1 single-sided aspherical lens) Yes (lens shift-type) |
| Image Stabilisation | Still: Adaptive Intelligent IS , Max. Approx. 4-stop stabilisation [13] Movie: 5-axis Advanced Dynamic IS |
| FOCUSING | |
| Type | Dual Pixel CMOS AF System. Phase detection pixels built onto imaging sensor [24] Maximum 49 AF points (Fixed location on 7x7 grid) via camera automatic selection [25] |
| AF System/ Points | Freely position 1 AF point/ 1 AF Zone (9 points, 3x3 grid) via manual selection [24] |
| AF Modes | Single, Continuous, Servo AF/AE [6], Touch AF AF area size customisable. |
| AF Point Selection | Touchscreen LCD active and Touch and Drag AF available when EVF is in use. |
| AF Lock | Yes, via customisable buttons |
| AF Assist Beam | Yes |
| Manual Focus | Yes, plus MF Peaking & AF + MF |
| Focus Bracketing | Yes |
| Closest Focusing Distance | 10 cm (Wide) from front of lens 30 cm (Tele) from front of lens |
| EXPOSURE CONTROL | |
| Metering modes | Real-time metering from the image sensor (1) Evaluative metering (linked to Face Detection AF frame) (2) Center weighted average metering (3) Spot metering |
| AE Lock | Yes, via customisable buttons +/- 3 EV in 1/3 stop increments |
| Exposure Compensation | ND Filter (3-stop) On/ Auto/ Off [16] |
| AEB | 1/3 – 2 EV in 1/3 stop increments (can be used together with manual compensation) |
| ISO sensitivity | AUTO, 100, 125, 160, 200, 250, 320, 400, 500, 640, 800, 1000, 1250, 1600, 2000, 2500, 3200, 4000, 5000, 6400, 8000, 10000, 12800, 25600 [15] AUTO ISO: 100 - 25600 (possible to set Max. ISO speed and rate of change) |
| SHUTTER | |
| Speed | 1 – 1/3200 sec. (factory default) 15 – 1/3200 sec. (total range – varies by shooting mode) |

| | |
|--------------------------------|---|
| WHITE BALANCE | |
| Type | TTL |
| Settings | Auto (including Face Detection WB), Daylight, Shade, Cloudy, Tungsten, White Fluorescent, Flash, Underwater, Colour Temperature (100 K increments) White balance compensation: 1. Blue/Amber +/-9 levels 2. Magenta/ Green +/-9 levels White Balance Compensation in Underwater mode |
| Viewfinder | |
| Viewfinder | EVF (0.39 type). Approx. 2,360,000 dots, OLED type |
| Viewfinder / Coverage | Approx. 100% |
| Eye point / Dioptre Correction | Approx. 22 mm (from eyepiece lens centre) -3.0 to +1.0 m-1 dpt (dioptic range) |
| LCD MONITOR | |
| Monitor | Var-angle 7.5 cm (3.0") Touchscreen LCD (TFT) with reinforced glass. 3:2 aspect ratio. Approx. 1,040,000 dots. Electrostatic capacitance type. |
| Coverage | Approx. 100% |
| Brightness | Adjustable to one of five levels. Quick-bright LCD (Press and hold INFO. Button) |
| FLASH | |
| Modes | Auto, Manual Flash On / Off, Slow Synchro |
| Slow Sync Speed | Yes. Fastest speed 1/2000 s |
| Red-Eye Reduction | Yes |
| Flash Exposure Compensation | +/- 2 EV in 1/3 stop increments |
| Flash Exposure Lock | Yes 3 levels with internal flash |
| Manual Power Adjustment | (Up to 22 selectable levels with Canon Speedlites [2][26]) |
| Second Curtain Synchronisation | Yes |
| Built-in Flash Range | 50 cm – 9.0 m (W) / 50 cm - 4.5 m (T) |
| External Flash | E-TTL with EX series Speedlites [2] |
| SHOOTING | |
| Modes | Smart Auto (58 scenes detected), Hybrid Auto, Program AE, Shutter priority AE, Aperture priority AE, Manual, Custom 1, Custom 2, SCN (Self-Portrait, Portrait, Smooth Skin, Panoramic Shot, Panning, Star (Star Nightscape, Star Trails, Star Time-Lapse Movie), Handheld Night Scene, Grainy B/W, Soft Focus, Fish-eye effect, Art Bold effect, Water painting effect, Toy camera effect, Miniature effect, HDR, Underwater., Fireworks), Movie (Standard, Short Clip, Manual, Time-lapse Movie) |
| Photo Effects | Picture Styles: Auto, Standard, Portrait, Landscape, Fine Detail, Neutral, Faithful, Monochrome, User Defined (x3) |
| Drive modes | Single, Auto Drive, High-speed continuous, Low-speed continuous, Self-Timer Fixed AF: Up to approx. 9 shots/s for up to 24 frames in JPEG [20], 19 frames in RAW [3] |
| Continuous Shooting | With AF: Up to approx. 7 shots/s for 29 frames in JPEG [3][20] |

no one sees it like you

Canon

PowerShot G1X Mark III

| | |
|--------------------------------|--|
| RECORDING PIXELS / COMPRESSION | RAW: (3:2) 6000 x 4000, (4:3) 5328 x 4000, (16:9) 6000 x 3368, (1:1) 4000 x 4000 JPEG 3:2: (L) 6000 x 4000, (M) 3984 x 2656, (S1) 2976 x 1984, (S2) 2400 x 1600 JPEG 4:3: (L) 5328 x 4000, (M) 3552 x 2664, (S1) 2656 x 1992, (S2) 2112 x 1600 JPEG 16:9: (L) 6000 x 3368, (M) 3984 x 2240, (S1) 2976 x 1680 (S2) 2400 x 1344 JPEG 1:1: (L) 4000 x 4000, (M) 2656 x 2656, (S1) 1984 x 1984, (S2) 1600 x 1600 |
| Image Size | RAW + JPEG, In-camera RAW processing & Resize available Panoramic Shot mode: Horizontal: Maximum recording pixels: 24064 x 2800 Minimum recording pixels: 6000 x 2800 Vertical: Maximum recording pixels: 16000 x 4200 Minimum recording pixels: 4200 x 4000 |
| Compression | RAW, Fine, Normal |
| Movies | (Full HD) 1920 x 1080, 59.94 / 50 / 29.97 / 25 / 23.98 fps (HD) 1280 x 720, 29.97 / 25 fps (VGA) 640 x 480, 29.97 / 25 fps |
| Movie Length | (Full HD & HD) Up to 4 GB or 29 min 59 s [7] (VGA) Up to 4 GB or 1 hour [4] |
| FILE TYPES | |
| Still Image Type | JPEG compression (Exif 2.3 [Exif Print] compliant) / Design rule for Camera File system and DPOF ver. 1.1 compliant), RAW (14bit, Canon original RAW 2nd edition), RAW+JPEG |
| Movies | MP4 [Video: MPEG-4 AVC / H.264, Audio: MPEG-4 AAC-LC (stereo)] |
| DIRECT PRINT | |
| Canon Printers | Canon SELPHY Compact Photo Printers and Canon Inkjet Printers supporting PictBridge [23] |
| PictBridge | Yes (via USB or Wireless LAN) [23] |
| OTHER FEATURES | |
| GPS | GPS via mobile (linked to compatible smartphone) |
| Red-Eye Correction | Yes |
| My Camera / My Menu | My Menu customisation available |
| Intelligent Orientation Sensor | Yes |
| Histogram | Yes, live histogram |
| Self Timer | Approx. 2, 10 s or Custom |
| Menu Languages | English, German, French, Dutch, Danish, Finnish, Italian, Greek, Norwegian, Portuguese, Russian, Swedish, Spanish, Ukrainian, Polish, Czech, Hungarian, Turkish, Simplified Chinese, Chinese (traditional), Japanese, Korean, Thai, Arabic, Romanian, Farsi, Hindi, Malay, Indonesian, Vietnamese, Hebrew |

| | |
|----------------------------|--|
| INTERFACE | |
| Computer | Hi-Speed USB dedicated connector (Micro-B Connector) |
| Other | HDMI Micro Connector Remote Switch Connector |
| Computer/Other | Wi-Fi (IEEE802.11b/g/n), (2.4 GHz only), with Dynamic NFC support [11] Bluetooth® (Specification version 4.1, Bluetooth low energy technology) [21] [22] |
| MEMORY CARD | |
| Type | SD, SDHC, SDXC (UHS Speed Class 1 compatible) |
| SUPPORTED OPERATING SYSTEM | |
| PC & Macintosh | Windows 10 / 8.1 / 7 SP1 [18] Mac OS X 10.10 / 10.11 / 10.12 / 10.13 For Wi-Fi connection to a PC: Windows 10 / 8.1 / 8 / 7 SP1 Mac OS X 10.10 For Image Transfer Utility: Windows 10 / 8.1 / 7 SP1 Mac OS X 10.9 / 10.10 / 10.11 / 10.12 / 10.13 |
| SOFTWARE | |
| Other | CameraWindow DC Map Utility Image Transfer Utility Camera Connect available on iOS and Android devices |
| Image Manipulation | Digital Photo Professional 4 for RAW development Picture Style Editor |
| POWER SOURCE | |
| Batteries | Rechargeable Li-Ion Battery NB-13L (battery and charger supplied) |
| Battery life | Approx. 200 shots Eco mode approx. 250 shots Approx. 240 min playback |
| A/C Power Supply | Charging via USB available with Compact Power Adapter CA-DC30E [17] or other typical USB charging methods |

For more information visit
canon.com.au
canon.co.nz

no one sees it like you

Canon

PowerShot G1X Mark III

| | |
|---------------------------------|--|
| ACCESSORIES | |
| Cases / Straps | Soft Case DCC-1830 PowerShot Neck Strap NS-100 Neck Strap NS-DC12 PowerShot Accessory Organizer |
| Waterproof / Weatherproof Case | Waterproof Case (40m) WP-DC56 Waterproof Case Weight WW-DC1 |
| Lenses | Lens Hood LH-DC110 |
| Flash | Canon Speedlites (including 220EX, 270EX, 270EX II, 320EX, 430EX, 430EX II, 430EX III-RT, 580EX, 580EX II, 600EX, 600EX-RT, 600EX II-RT, Speedlite Transmitter ST-E2, Speedlite Transmitter ST-E3-RT) Off-Camera Shoe Cord OC-E3, Speedlite Bracket SB-E2 |
| Remote Controller/ Switch | Remote Switch RS-60E3 Timer Remote Controller TC-80N3 [28] |
| Power Supply & Battery Chargers | Compact Power Adapter CA-DC30E Battery Charger CB-2LHE |
| Other | Interface cable IFC-600PCU Canon Connect Station CS100 |
| PHYSICAL SPECIFICATIONS | |
| Operating Environment | 0 – 40 °C, 10 – 90% humidity Dust and moisture resistant construction [27] |
| Dimensions (WxHxD) | 115.0 x 77.9 x 51.4 mm |
| Weight | Approx. 399 g (including battery and memory card) |

All data is based on Canon standard testing methods (according to CIPA Standards) except where indicated

Subject to change without notice

[1] Depending on the image size selected

[2] Not all functions of the flash are supported

[3] Under conditions where the flash does not fire

[4] Depending on memory card speed / capacity / compression setting

[6] Some settings limit availability

[7] The following Speed Class memory cards are required for maximum record time: (HD) 1280 x 720 Speed Class 4 or above. (Full HD) 1920 x 1080 Speed Class 6 or above. (Frame) 1280 x 720 Speed Class 6 or above

[11] Wi-Fi use may be restricted in certain countries or regions. Wi-Fi support varies by device and region. For more information visit www.canon-europe.com/wirelesscompacts

[13] Values at maximum optical focal length. Cameras whose focal length exceeds 350 mm (35 mm equivalent) are measured at 350 mm

[15] ISO sensitivity denotes Recommended Exposure Index

[16] Auto ND Filter not available in Movie Mode

[17] Charging via USB requires Interface Cable IFC-600PCU (Sold separately) or similar cable with USB Micro-B to USB type-A connectors. Charging time varies depending on the remaining battery power

[18] Software applications compatible with Windows 10 in Windows 10 Desktop Mode only

[20] Sustained continuous shooting speed is tested based on Canon's testing standard. Function requires compatible SDHC/SDXC UHS Speed Class 1 memory card, total number of frames captured varies depending on shooting subject, settings and brand of memory card

[21] Equipped with Bluetooth® low energy technology. The Bluetooth® word mark and logos are registered trademarks owned by the Bluetooth

[22] Bluetooth connection requires smart device to be equipped with Bluetooth version 4.0 (or later). Also requires smart device to be using operating system iOS 8.4 (or later) or Android 5.0 (or later) as well as latest version of Camera Connect app installed

[23] Not compatible with following PictBridge compatible SELPHY CP200/ CP220/ CP300/ CP330/ CP400/ CP500/ CP600/ ES1

[24] Dual Pixel CMOS AF - AF is possible over an area of approx. 80% Vertical x 80% Horizontal of the frame

[25] Maximum number of AF frame is dependent on selected image aspect ratio

[26] Level of adjustment is dependent on the Speedlite attached

[27] To maximize the camera's dust and drip resistance, keep the terminal cover, memory card/battery cover and all other covers firmly closed. This camera is designed to be dust and drip resistant, in order to help prevent sand, dust, dirt, or water that falls on it unexpectedly from getting inside, but it is impossible to prevent dirt, dust, water, or salt from getting inside at all

[28] Require Remote Controller Adapter RA-E3

no one sees it like you

Canon